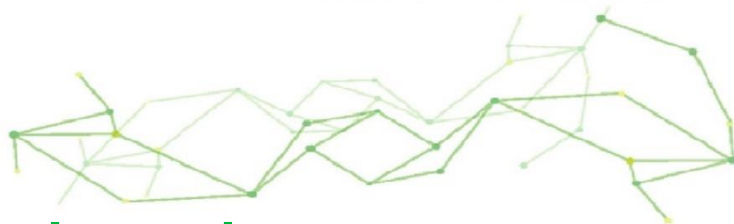




EWE

Waterbased

anti-settingting & anti-sagging agent



Overview

EWE is a specialized high-density, activated modified wax-based waterborne anti-settling and anti-sagging agent, primarily suitable for various water-based inks and coatings. It offers ease of handling, easy dispersion, anti-sagging properties, and aids in the positioning of matting powders and aluminum pastes, with minimal impact on leveling and gloss.

Physicochemical Properties

Appearance	Yellow-brown liquid	Composition	Anionically modified EVA (ethylene-vinyl acetate) wax
Solid Content	35.0±2.0 %	Solvent	Water
Density	0.98 g/ml	pH Value	8.5-10.5

Characteristics & Advantages

Specially micronized EVA wax derivative with excellent heat resistance and anti-yellowing properties. Its narrow particle size distribution makes it easier to disperse and activate, providing superior anti-settling properties and aiding in aluminum paste whitening.

- Easily dispersible at high speeds at room temperature, with storage stability and resistance to agglomeration.
- Excellent aluminum paste whitening effect and storage stability.
- Aids in the orientation of aluminum flakes and metallic pigments; also provides anti-settling and anti-sagging effects.
- Excellent heat resistance and anti-yellowing properties.
- Can be added directly post-production.
- Soluble in cold water.

Dosage

Recommended dosage: 1-5% of the total formulation.

Application

Water-based inks, water-based color pastes, water-based industrial coatings, water-based wood coatings, water-based metallic coatings, etc.

**Precautions
Storage**

& Store at 5-30 °C in a cool, ventilated place. Keep containers tightly sealed and away from heat and ignition sources.

If not fully used after opening, reseal completely to prevent moisture ingress.

Safety

Refer to MSDS

Packaging

25 KG/Barrel